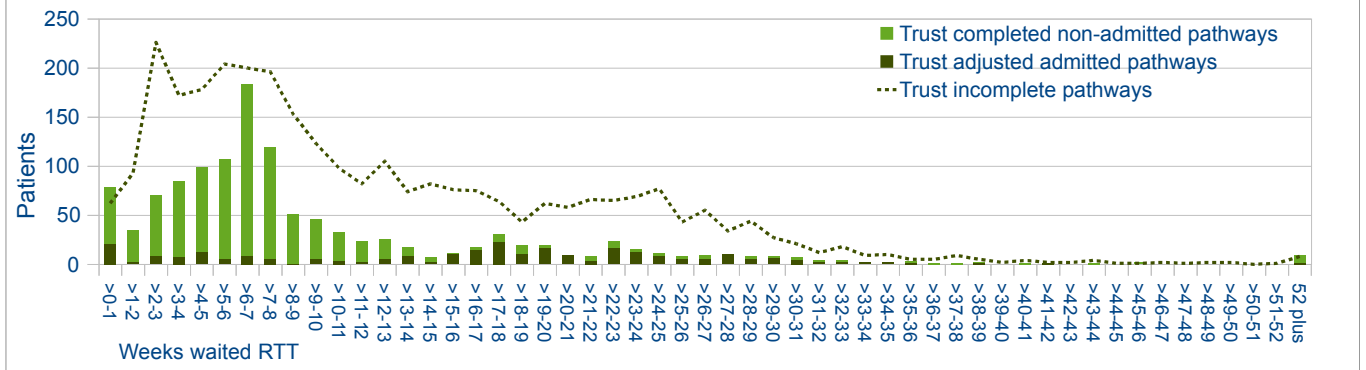


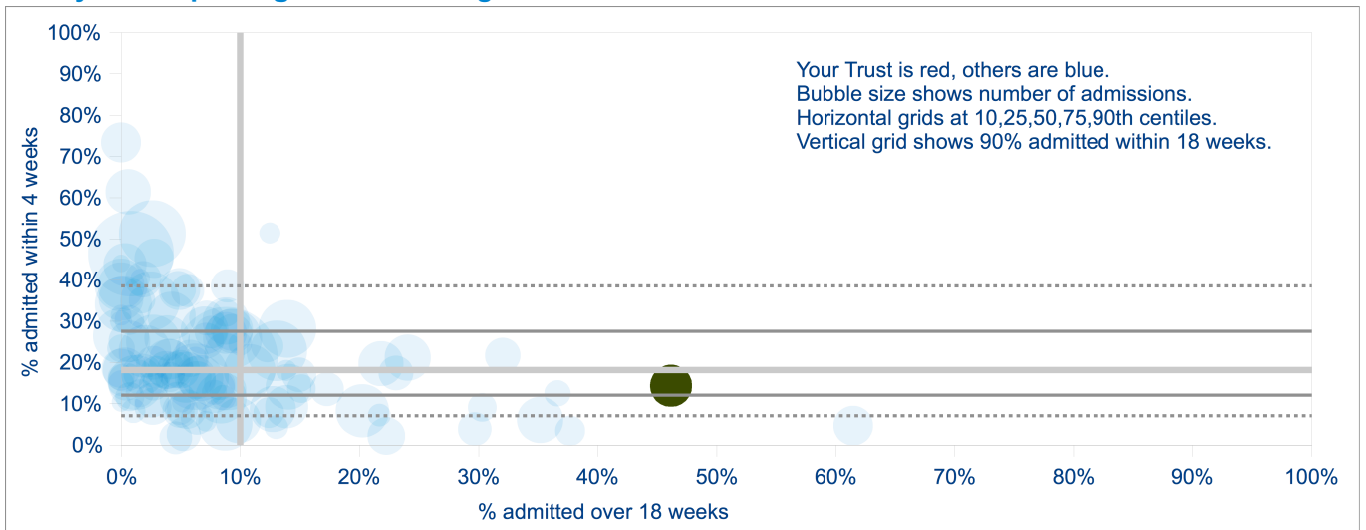
Western Sussex Hospitals NHS Trust
 Ophthalmology

Your latest data: December 2010

Are clinical priorities under pressure?	No pressure indicated (urgent admissions are not in the lowest quartile)
Could better scheduling cut waiting times?	Limited scope for improvement through patient scheduling alone
Achieving 90% admitted within 18 weeks?	Not achieved - 53%
Pressure from number of patients waiting?	Great pressure - one in ten have waited longer than 25 weeks



How you compare against other English Trusts



How you compare over time

