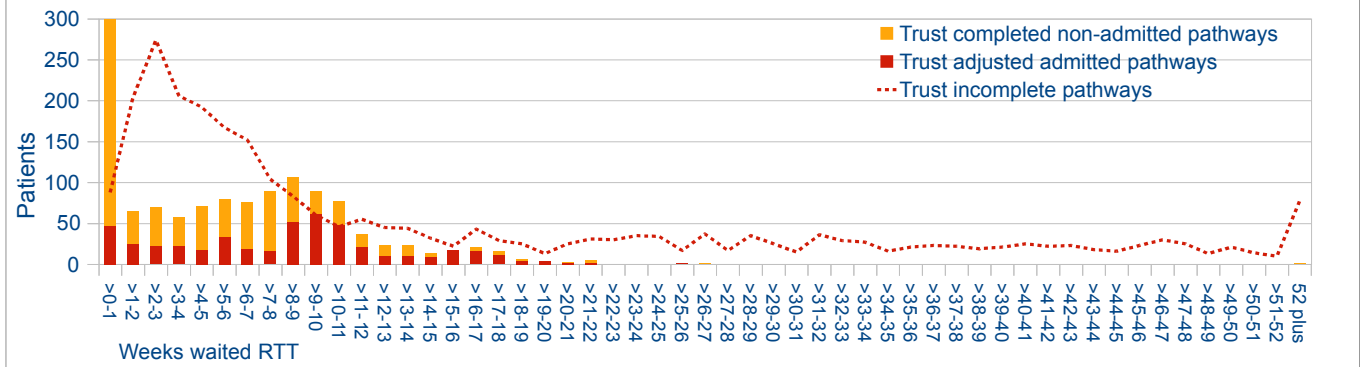


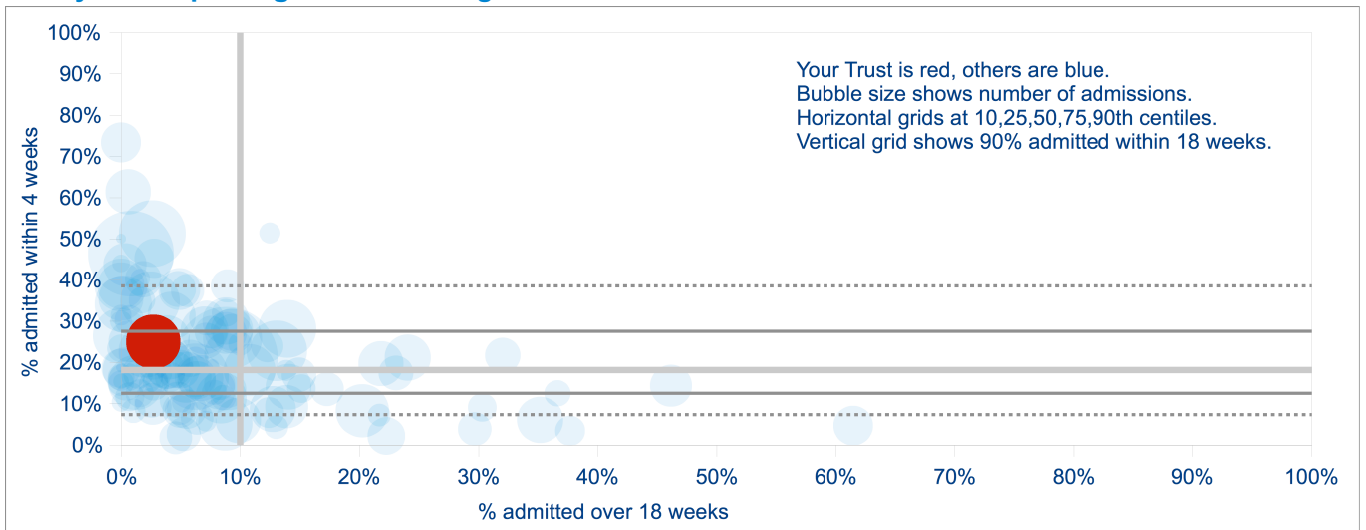
Royal Berkshire NHS Foundation Trust
Ophthalmology

Your latest data: December 2010

Are clinical priorities under pressure?	No pressure indicated (urgent admissions are not in the lowest quartile)
Could better scheduling cut waiting times?	Large reductions possible by improving patient scheduling
Achieving 90% admitted within 18 weeks?	Comfortably - 97%
Pressure from number of patients waiting?	Great pressure - one in ten have waited longer than 41 weeks



How you compare against other English Trusts



How you compare over time

